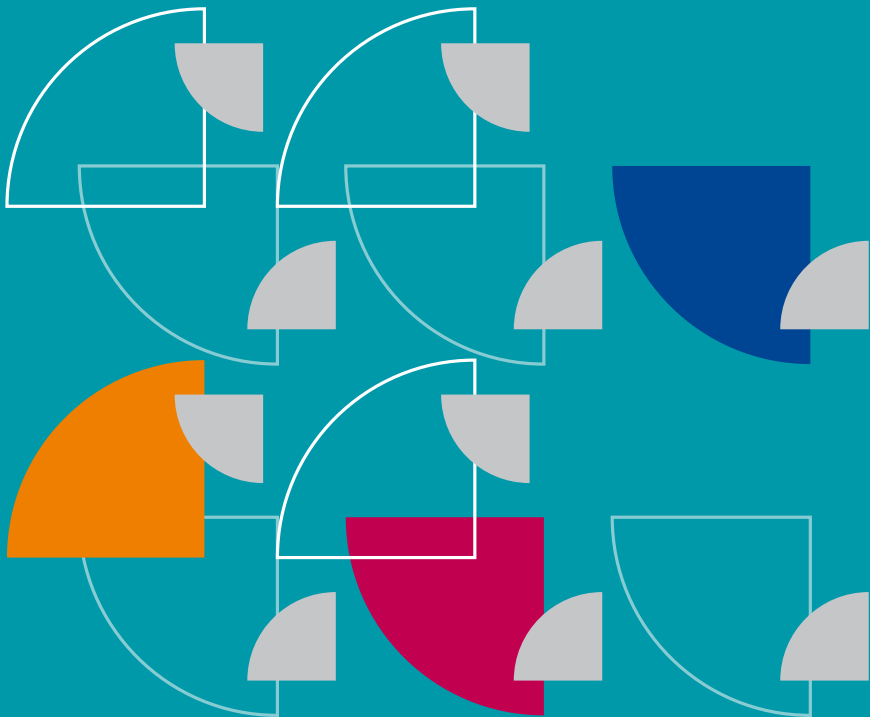


Welcome to Luxembourgish schools!

Information for foreign parents and students

English

EN



CASNA

Cellule d'accueil scolaire
pour élèves nouveaux arrivants



LE GOUVERNEMENT
DU GRAND-DUCHÉ DE LUXEMBOURG
Ministère de l'Éducation nationale
et de la Formation professionnelle

Welcome to Luxembourgish schools!

Information for foreign parents and students

© Ministère de l'Éducation nationale
Service de la scolarisation des enfants étrangers

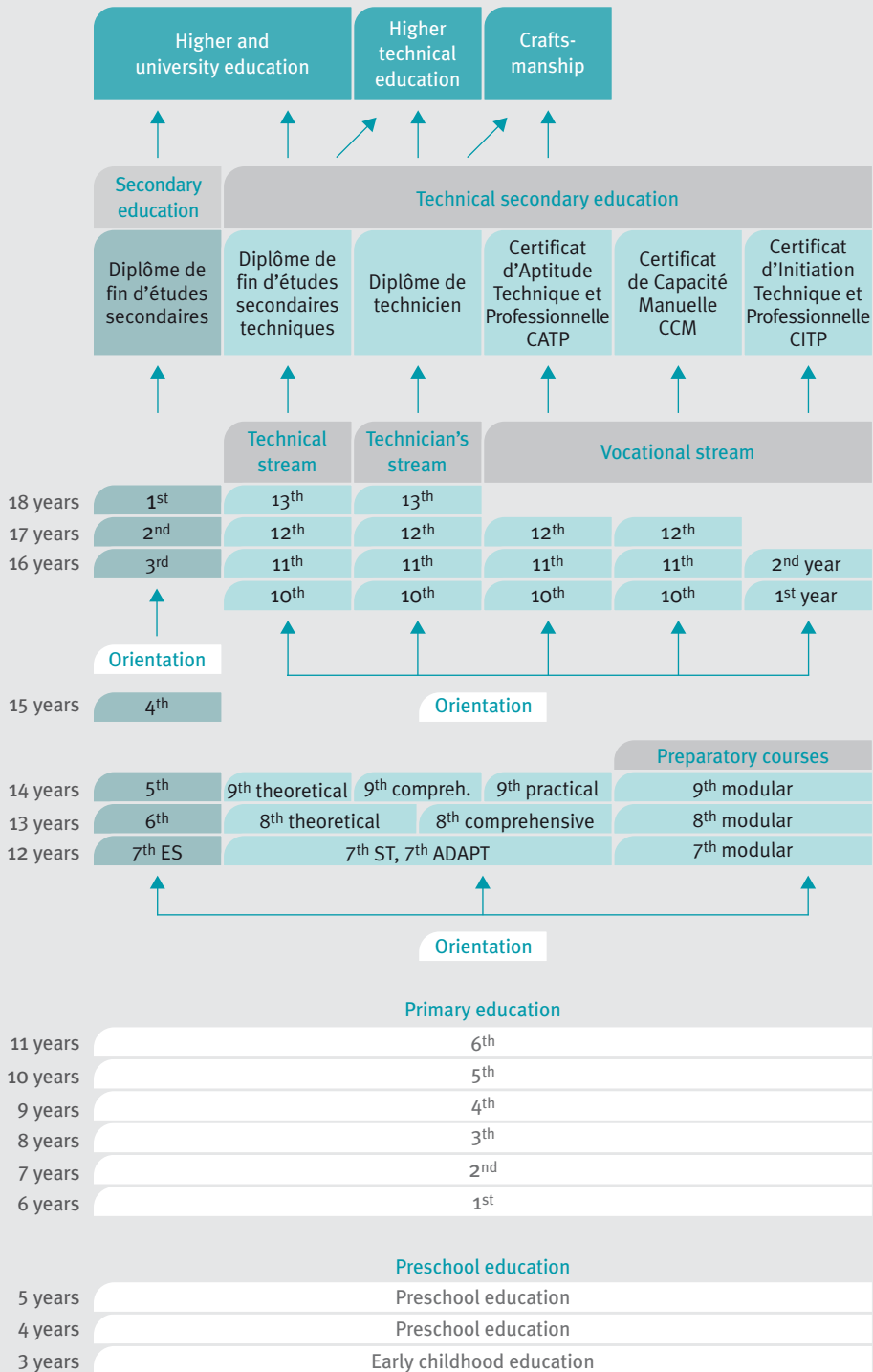
September 2008

ISBN 978-2-87995-987-0

1

Luxembourg's School System





Information for newly arrived pupils

CASNA

Reception desk for newly arrived pupils – Cellule d'accueil scolaire pour élèves nouveaux arrivants (CASNA) – provides information on the Luxembourg school system and on support measures for children with foreign mother tongues.

3-11 years

To enrol children aged 3-11 in school, parents should contact directly their municipality of residence (see Chapter 4).

12-17 years

Pupils from 12 to 17 years of age are oriented toward post-primary education. This is done by CASNA, who advise the pupils and their families. They evaluate the pupils' academic records and language abilities and refer them to a specific secondary school.

Documents to provide

When attending a meeting with CASNA (for post-primary education), please bring:

- Identity card or passport;
- Social security card;
- Academic records for the last two school years;
- Family civil status record
or a copy of your certificate of residence (which can be collected from the local authority of the district in which you live) or certified registration of request for international protection.





Contact

CASNA – Cellule d'accueil scolaire pour élèves nouveaux arrivants

Reception desk for newly arrived pupils
Service de la scolarisation des enfants étrangers
Ministère de l'Éducation nationale
29, rue Aldringen
L- 1118 Luxembourg
Tel. (+352) 247 85277
Fax (+352) 247 85140
casna@men.lu

Opening hours, on appointment only

Tuesdays and Thursdays from 8.30 am
to 11.30 am and from 2.30 pm to 4.30 pm
Reception in Luxembourgish, French,
German, English and Portuguese
(other languages on request).

Further information

Ministère de l'Éducation nationale
www.men.public.lu
under the heading "Enfants étrangers"

3

Helps when communicating with schools

Intercultural mediation

Parents, teachers and the school authorities can request free assistance from an intercultural mediator who speaks Albanian, Cape Verdean Creole, Chinese, Italian, Portuguese, Serbo-Croat or Russian, as well as to the languages commonly used in Luxembourg.

Intercultural mediators are fully versed in the school system. They act confidentially and help parents, pupils and teachers at school or in class. They can also provide the following services:

- translating during individual face to face meetings between teachers, pupils and parents;
- providing information on previous schooling in the country of origin;
- providing verbal or written translations: letters from teachers or school reports, for example;
- accompanying the pupil to psychological care services to deal with matters relating to school.





Intercultural mediators contact

Tel. (+352) 247 85136
Fax (+352) 247 85140
mediateurs@men.lu

4

Schooling for children from 3 to 12 years of age



Early childhood and preschool education - cycle 1 (3-6 years)

Enrolment

At the education department of the municipality of residence or at the municipal offices.

Early childhood education – éducation précoce – (at 3 years) is optional.

Preschool education – éducation préscolaire – (4-6 years) is compulsory.

The language of schooling is Luxembourgish.



Primary education - cycles 2, 3, 4 (6-12 years)

Enrolment

At the education department of the municipality of residence or at the municipal offices.

Languages

Reading and writing is taught in German.
The teaching language for grades 1 to 6 is German.

From the second half of grade 2, children begin to learn French.

Children who first arrive when they are very young are integrated into standard primary classes, where they learn Luxembourgish, German and French.

The majority of municipalities offer either courses or initiation classes for newly arrived pupils. The number of hours set aside for teaching German and/ or French depends on the age and language skills of the pupils. The desired goal is integration into a regular class as quickly as possible.

Transition from primary to secondary education (age 12)

During the 6th year of primary education, all pupils participate in an orientation process. The teachers and the inspector inform parents of the progress of the process.

For more information, please visit:
www.men.public.lu/sys_edu/primaire/ppp_primaire/index.html

5

Schooling for pupils from 12 to 17 years of age



Pupils aged 12 to 17 years

After the 6th year of primary education, pupils are oriented toward classical or technical secondary education.

Pupils having completed their 6th year of primary studies in Luxembourg participate in the orientation process (see Chapter 4).

All newly arrived pupils aged 12 or over must contact the Cellule d'accueil scolaire pour élèves nouveaux arrivants, CASNA (see Chapter 2).

Technical secondary education

Classes for newly arrived pupils

- Initiation classes / ACCU (12-15 years) with intensive French language tuition.
- 7th, 8th and 9th grade insertion classes (12-15 years)
Classes in the lower section of technical secondary education. These are for pupils with a good level of education in their country of origin, but who do not have a solid grasp of the languages taught in Luxembourg.



They follow the courses of the lower section of technical secondary education and receive intensive French courses (STF classes) or German (STA classes), determined according to their language knowledge.

- Initiation classes / CLIJA (for young adults from 16-17 years) with intensive French courses.

Classes taught in French

- From grade 7: modular French-taught classes.
- From grade 8: comprehensive French-taught classes.
- From grade 9: practical French-taught classes.
- From grade 10 of technical education: a large number of vocational and technical courses are offered in French. The syllabus is identical to those of normal classes, but the teaching language is French instead of German.

Schooling for pupils from 12 to 17 years of age



French-taught classes exist for the three educational streams:

- The technical stream (régime technique) that prepares to the technical baccalaureate.
- The technician's stream (régime de technicien) that prepares to the technician certificate.
- The vocational stream (régime professionnel) that prepares for the following diplomas:
Certificat d'aptitude technique et professionnelle (CATP);
Certificat de capacité manuelle (CCM);
Certificat d'initiation technique et professionnelle (CITP).

The technical stream and the technician's stream provide access to higher education and / or a professional career.

The vocational stream allows direct access to professional life.



Classical secondary education

Classical secondary education lasts 7 years and prepares for the *Diplôme de fin d'études secondaires*.

Excellent knowledge of German and French is required from the first year. English is taught from the second year.

The International Baccalaureate (IBO)

The classes offered are intended mainly for pupils recently arrived in Luxembourg, who are opting for a secondary education in French or English and are capable of pursuing a high level of secondary education. Teaching is provided in either French (for pupils from age 15) or English (for pupils from age 14).

The International Baccalaureate diploma is a widely accepted secondary school leaving certificate which is currently being offered by some 2,000 secondary schools in 125 countries worldwide. The IBO offered in Luxembourg is legally recognized as an equivalent to the Luxembourgish *Diplôme de fin d'études secondaires*.



**Ministère de l'Éducation nationale
et de la Formation professionnelle**

Information on schooling of foreign pupils

**Service de la scolarisation
des enfants étrangers**

29, rue Aldringen
L-1118 Luxembourg
Tel. (+352) 247 85207
Fax (+352) 247 85140

Reception desk for newly arrived pupils

**Cellule d'accueil scolaire
pour élèves nouveaux arrivants (CASNA)**

29, rue Aldringen
L-1118 Luxembourg
Tel. (+352) 247 85277
Fax (+352) 247 85140
casna@men.lu

Certification of educational levels and recognition
of the following qualifications: baccalaureate,
CATP, craftsmanship, social services and teaching
professions, health professions

Service de la reconnaissance des diplômes

29, rue Aldringen
L-1118 Luxembourg
Tel. (+352) 247 85910
Fax (+352) 247 85933
reconnaissance@men.lu

Job seeking for young people

Action locale pour jeunes (ALJ)

29, rue Aldringen
L-1118 Luxembourg
Tel. (+352) 247 85241
Fax (+352) 47 41 16
noesen@men.lu
www.alj.lu



Adult vocational training / lifelong learning
(over 18 years)

**Formation des adultes /
Formation tout au long de la vie**

29, rue Aldringen
L-1118 Luxembourg
Tel. (+352) 247 85232
Fax (+352) 247 85155
sfa@men.lu

Language courses for youngsters
over 16 and adults

Centre de Langues Luxembourg

21, boulevard de la Foire
L - 1528 Luxembourg
Tel. (+352) 26 44 30 - 1
Fax (+352) 26 44 30 - 30
secretariat@cll.lu

**Centre de Langues Luxembourg
Annexe Mersch**

57, rue Grande-Duchesse Charlotte
L - 7520 Mersch
Tel. (+352) 26 32 45 - 1
Fax (+352) 26 32 45 - 45
secretariat@annexe-mersch.cll.lu

Educational guidance

**Centre de Psychologie et
d'Orientation scolaires (CPOS)**

280, route de Longwy
L - 1940 Luxembourg
Tel. (+352) 45 64 64 - 1
Fax (+352) 45 45 44
www.cpos.lu

Useful addresses

Ministère de la Culture, de l'Enseignement supérieur et de la Recherche

Information on higher and university education

**Centre de Documentation et d'Information
sur l'Enseignement supérieur (CEDIES)**

209, route d'Esch

L - 1471 Luxembourg

Tel. (+352) 247 88650

Fax (+352) 26 19 01 04

cedies@mcesr.etat.lu

www.cedies.lu

Recognition of a foreign higher education degree

**Homologation des diplômes d'enseignement
supérieur étrangers (CEDIES)**

211, route d'Esch

L - 1471 Luxembourg

Commission d'Homologation:

Tel. (+352) 247 85135

Fax (+352) 26 19 01 04



Ministère de l'Éducation nationale
et de la Formation professionnelle

Service de la scolarisation
des enfants étrangers

CASNA

Cellule d'accueil scolaire
pour élèves nouveaux arrivants

29, rue Aldringen
L - 1118 Luxembourg
Tel. (+352) 247 85277
Fax (+352) 247 85140
casna@men.lu